

## COMPLETA LE PAROLE CON **B** O **P**



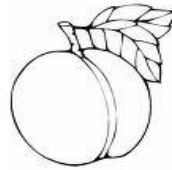
\_ APPAGALLO



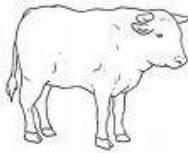
OM \_ RELLO



\_ IEDE



\_ ESCA



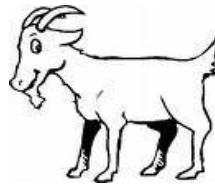
\_ UE



\_ ENTOLA



\_ ORSA



CA \_ RA



\_ ANDA



STAM \_ ECCO



\_ OCCA



SA \_ ONE



\_ ANCA



\_ A M \_ OLA