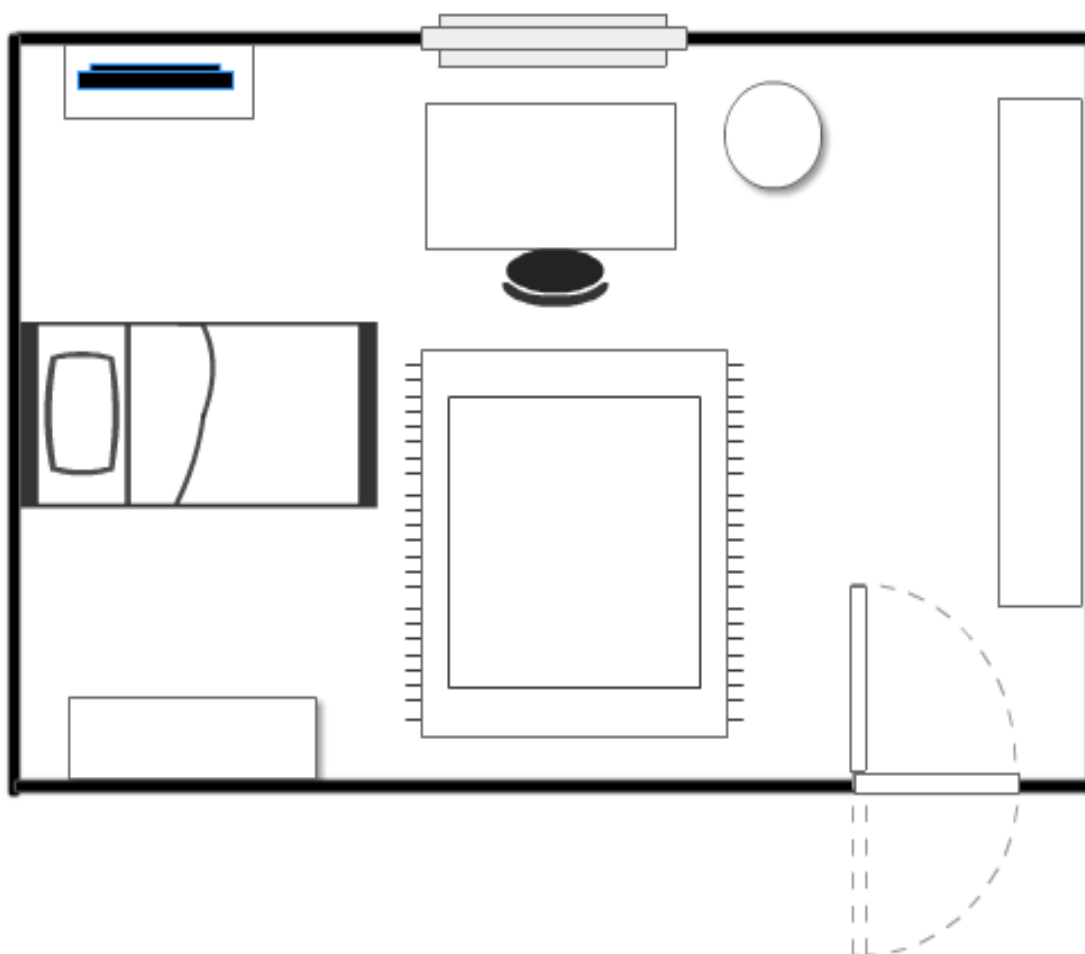


La cameretta di Giulio

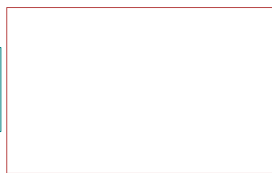
Questa è la cameretta di Giulio, osserva con attenzione tutti gli arredi che la compongono.

Completa poi la legenda disegnando i simboli che rappresentano ogni elemento.



LEGENDA:

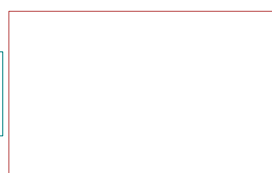
LETTO



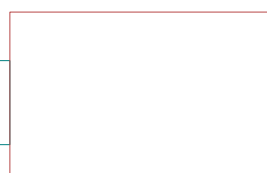
MOBILE -TV



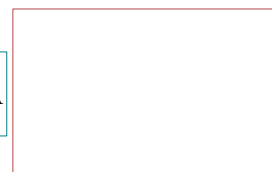
CESTO
per giocattoli



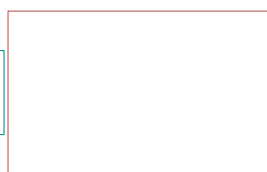
ARMADIO



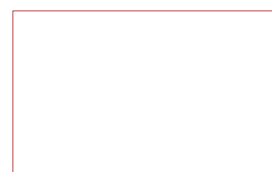
CASSETTIERA



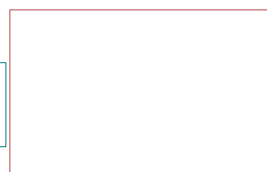
PORTA



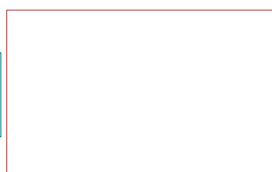
SCRIVANIA



TAPPETO



SEDIA



FINESTRA

